

AMS

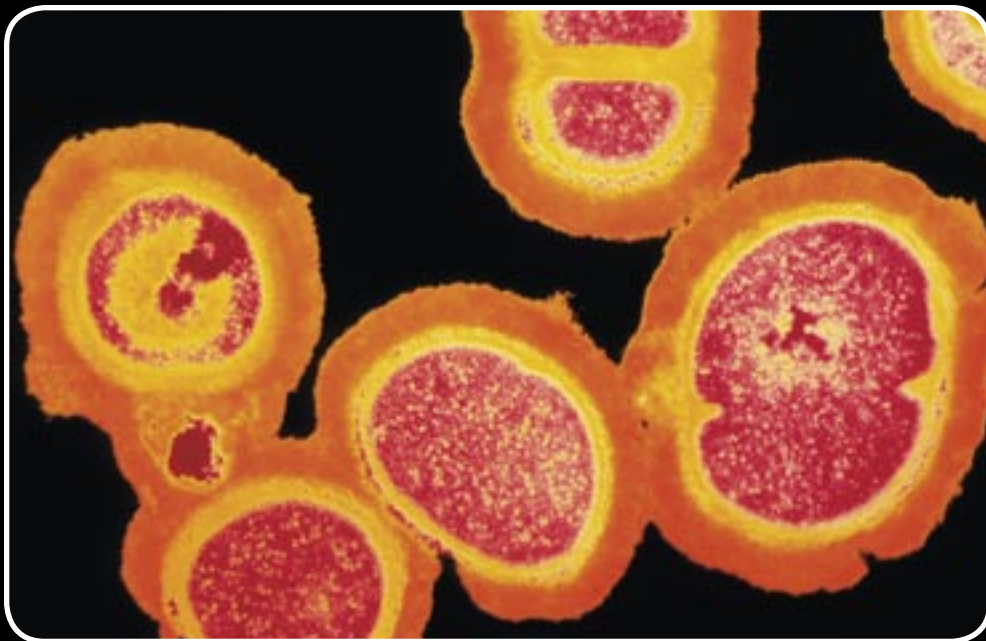
Mobile Equipment Cleansing Unit (MeQ)

www.vantrailer.com

Current cleaning methods define the systems for cleaning hospital beds and other equipment as 'damp dusting with general purpose detergent' and 'wiping with 10,000ppm of available chlorine' for surfaces known to have been used by an infected patient.

The Department of Health has recently published results of a report, which states that newer cleaning technologies are very effective at controlling infection, specifically micro-fibre and steam cleaning.

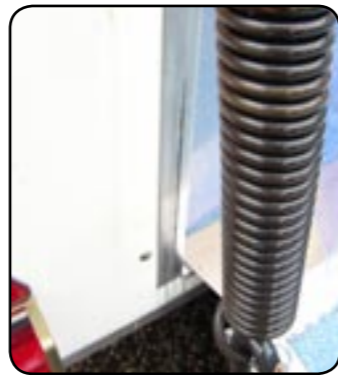
Given the increase in Clostridium difficile in the UK, effective equipment cleaning by itself will make a considerable impact on preventing infection spread.



INTRODUCING TOTAL PROTECTION FROM AMS (Because deep down cleaning demands more than disinfectant)

- AMS's unique Mobile Equipment Cleansing Units (MeQ) are designed to reduce hospital-acquired infections such as MRSA and Clostridium difficile by cleaning beds and all other equipment more thoroughly than ever before. The units are equally effective in nurseries, schools, leisure centres and in other buildings where high standards of cleanliness are imperative.
- They can visit individual sites as and when required.
- They are easily transported and positioned outside building entrances for maximum convenience.
- Equipment is quickly loaded into the units, cleaned and returned to their original location.
- Combined with the thorough (and easier) cleaning of empty wards, AMS MeQ ensures the most effective solution to hospital-acquired infection problems.

Norfolk and Waveney 
Mental Health Partnership
NHS Trust



Exterior Features

Chassis

- Constructed from galvanized rolled steel for strength and durability.
- Chassis design delivers maximum interior width between wheel arches.

Trailer body

- Main body panels are constructed from GRP-coated plywood with a smooth gloss finish; external corners are capped with anodised aluminium.
- The front of the trailer is fitted with a fibreglass nose cone (see Interior Features) for aerodynamic efficiency and, together with the body panel finish, easy cleaning.
- The full-height rear ramp incorporates counter-balanced spring assisters for enhanced lowering and lifting. A lip on the leading edge of the ramp provides a smooth link with the ground for easier loading and unloading.
- Twin grab handles are fitted to front and rear of the trailer to aid manoeuvrability.
- Fold-down stays are located at the trailer's corners to improve stability when the unit is in use.
- The external roof is constructed from a lightweight fibreglass panel with two roof-lights to provide natural daylight to the vehicle's interior.
- Full MOT lighting is fitted to the trailer, fed via a standard 7-pin plug connected to the socket on the towing vehicle.

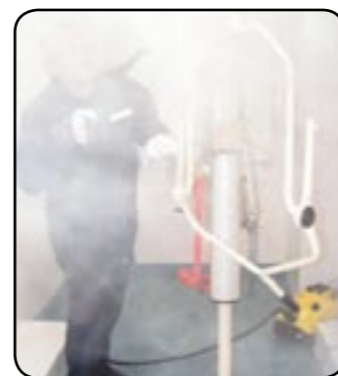
The mobile equipment cleansing unit from AMS. In detail. In depth.

Dimensions (mm)

| | |
|---|------|
| Overall length including 'A' frame and coupling | 5100 |
| Trailer length | 3600 |
| Width | 2000 |
| Overall height from floor | 2570 |
| Internal height | 2010 |

Weight (Kg)

| | |
|--------------------|------|
| Gross laden weight | 1500 |
|--------------------|------|



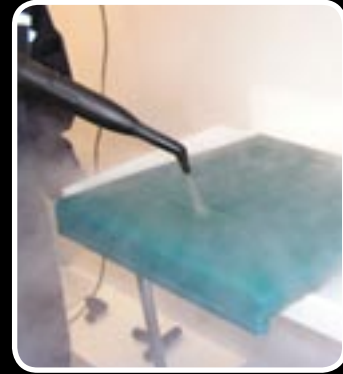
Interior Features

- The trailer floor is constructed from WBP plywood, treated before being bolted to chassis. Heavy-duty industrial covering is bonded to the floor; fully sealed to prevent water entrance. Four integral drainage points allow excess water to be expelled using the appropriate sweeping tool.
- The interior incorporates a shower jet for hosing down equipment, a wash hand basin for personal hygiene and a large cleaning table
- A water heater fitted above the basin provides continuous hot water.
- A 13 amp waterproof socket provides power for a mobile steam cleaner (or other cleaning equipment).
- The interior of the trailer nosecone incorporates stowage facilities for disposable gloves, aprons and chemicals.
- Staff locker facilities provide ample space for personal belongings.
- A manually operated winch/belt is fitted to the rear bulkhead – the belt is attached to large and heavy equipment for safe and easy loading and unloading.

AMS

Mobile Equipment Cleansing Unit (MeQ)

www.vantrailer.com



AMS. PROUD TO BE A PART OF OPERATION DEEP CLEAN

- AMS is one of Europe's leading manufactures of decontamination plant and equipment, supplying hundreds of companies throughout the continent.
- From hospital-acquired infections – such as MRSA or Clostridium difficile – to problems including asbestos and other hazardous material, our expertise and experience guarantees high quality solutions with competitive costs.
- AMS has played a key role in the design and manufacture of the unique Mobile Equipment Cleansing Unit, which reduces infections by cleaning equipment more thoroughly than ever whilst providing new standards of operational speed and convenience.

The AMS Group of Companies cover the following aspects:

- UKAS Accredited Asbestos Surveys and Bulk Sampling Analysis.
- Project Management.
- Manufacturer of Decontamination Systems and Asbestos Removal Equipment.
- Hygiene and Cleansing Units.
- Personal Protective Equipment (PPE) and work-wear distribution.
- Industrial Supplies.

AMS Trailer LLP

Unit 1, 9 Cannon Lane, Tonbridge Kent, TN9 1PP

Phone: 01732 368359 Fax: 01732 368361

Email: jon.everest@ams-holdings.com Web: www.ams-holdings.com